

Middlesbrough COVID-19 Update

1 November 2021



National LA Summary

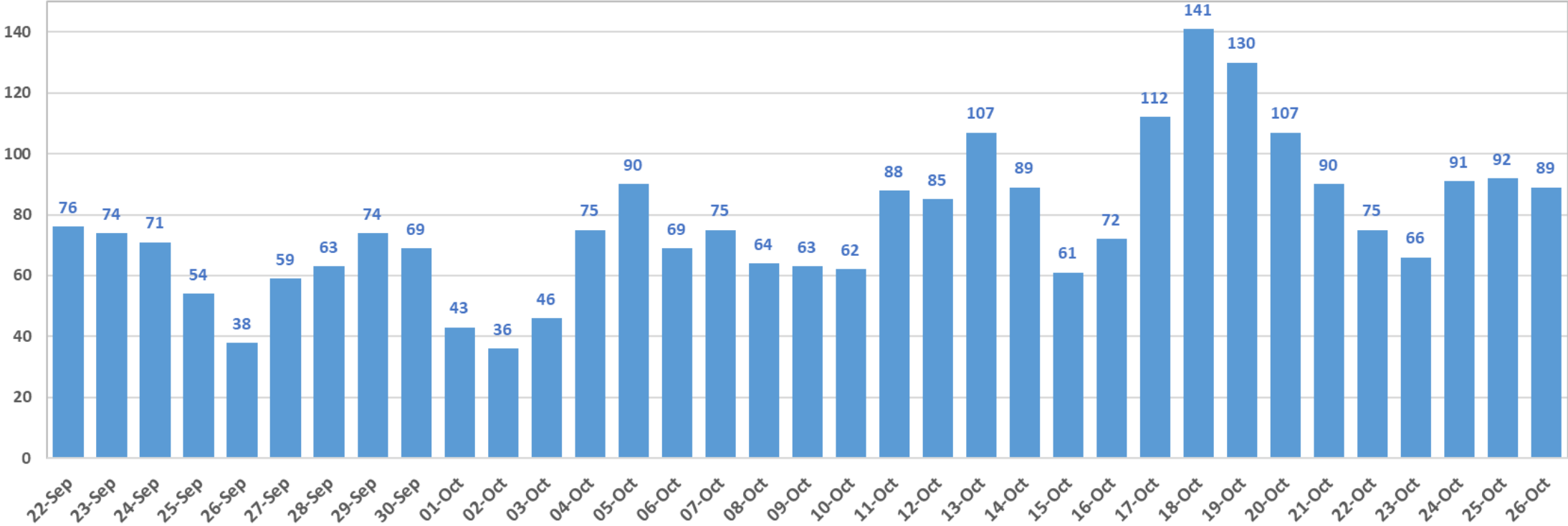


Local Authority	Current Week <i>Up to 25th October</i>		Previous Week <i>Up to 18th October</i>		Weekly Rank Change	Weekly Rate Change
	Rate per 100,000	Rank	Rate per 100,000	Rank		
Bath and North East Somerset	878	1	1,076	2	1	-18%
Swindon	827	2	1,089	1	-1	-24%
Gloucestershire	807	3	1,003	3	0	-19%
North Tyneside	787	4	691	12	8	14%
South Gloucestershire	745	5	921	5	0	-19%
North Somerset	736	6	980	4	-2	-25%
Wiltshire	728	7	919	6	-1	-21%
Somerset	708	8	887	8	0	-20%
West Berkshire	692	9	906	7	-2	-24%
Buckinghamshire	646	10	634	16	6	2%
Hampshire	612	11	627	17	6	-2%
Central Bedfordshire	599	12	498	55	43	20%
Bristol, City of	599	13	762	9	-4	-21%
Wokingham	585	14	677	13	-1	-14%
Rotherham	569	15	640	15	0	-11%
Telford and Wrekin	566	16	606	22	6	-7%
Halton	561	17	708	10	-7	-21%
Northumberland	561	18	567	29	11	-1%
Dorset	553	19	573	27	8	-3%
Southampton	550	20	541	41	21	2%
Middlesbrough	455	64	472	73	9	-4%

COVID Daily Cases



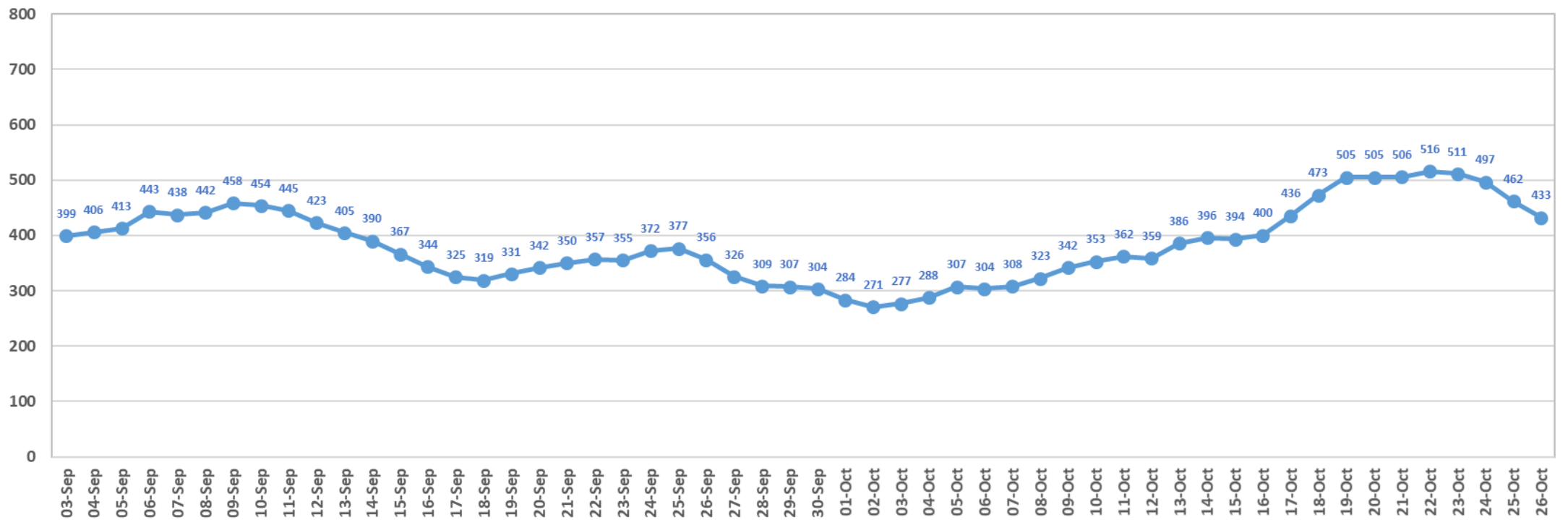
Middlesbrough COVID Cases by Specimen Test Date



COVID Case Rate



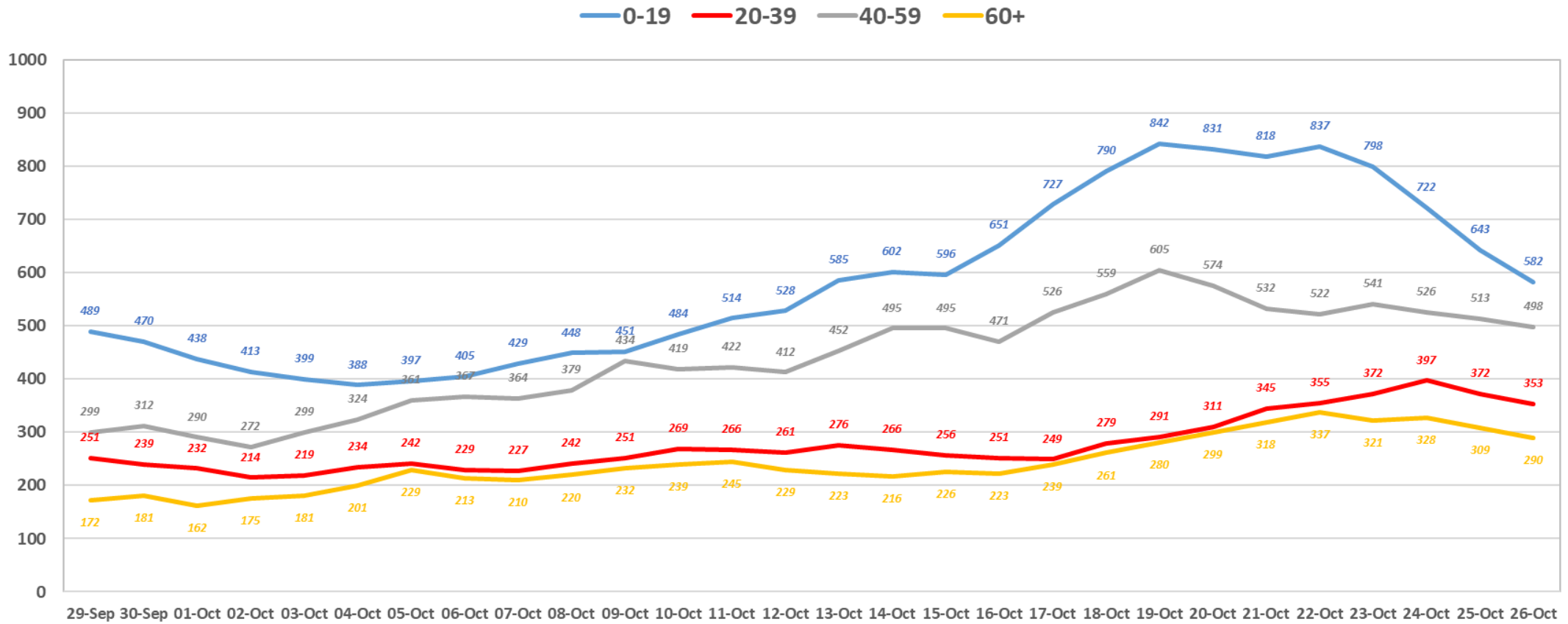
Rate of Middlesbrough Cases based on Specimen Test Date - Rolling 7 Day Average
Rate per 100,000



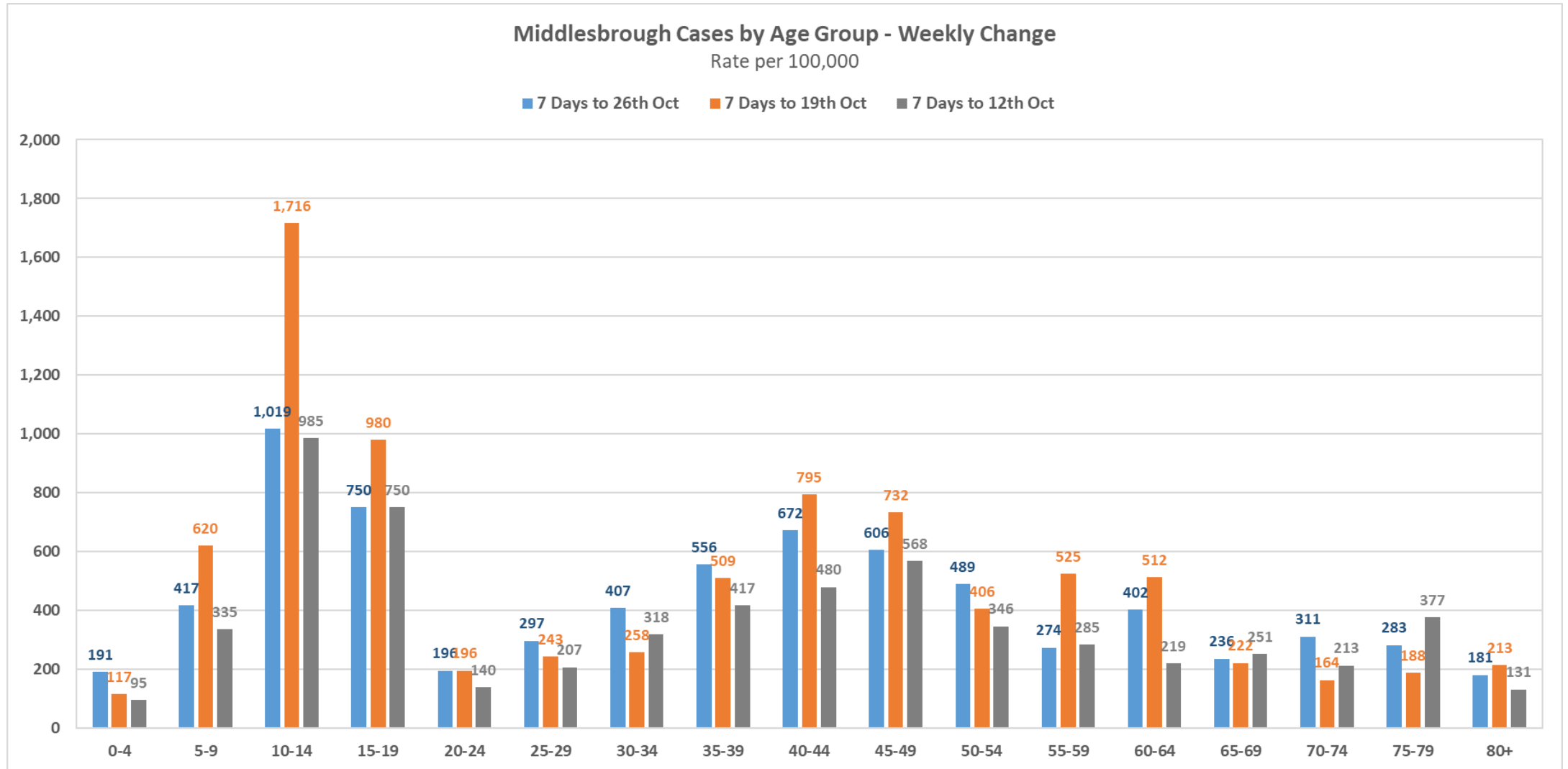
COVID Case Rate – Age Groups



Middlesbrough COVID Cases by Specimen Date - Rolling 7 Day Rate by Age Group per 100,000



COVID Case Rate – Sub Age Groups



COVID School Cases



LA & School	Pupil	Staff	Total
Primary	73	19	92
Pallister Park Primary School	9	5	14
St Augustines RC Primary School	12	1	13
Green Lane Primary Academy	8		8
Sunnyside Academy	2	4	6
Kader Primary Academy	6		6
Berwick Hills Primary School	1	4	5
Linthorpe Community Primary School	5		5
St Alphonsus RC Primary School	5		5
Whinney Banks Primary School	3	2	5
St Clares RC Primary School	4		4
The Avenue Primary School	3		3
Beech Grove Primary School	3		3
Marton Manor Primary School	2	1	3
Newport Primary School	2		2
Hemlington Hall Academy	2		2
Chandlers Ridge Academy	1	1	2
St Josephs RC Primary School	1	1	2
Breckon Hill Primary School	1		1
Trinity Catholic College	1		1
Corpus Christi RC Primary School	1		1
Captain Cook Primary School	1		1
Secondary	198	7	205
Macmillan Academy	118		118
Outwood Academy Acklam	19	3	22
Acklam Grange School	16	4	20
Trinity Catholic College	18		18
The Kings Academy	17		17
Outwood Academy Ormesby	7		7
Unity City Academy	3		3
Specialist	7	1	8
Beverley School	4		4
Priory Woods School	3	1	4
Total	278	27	305

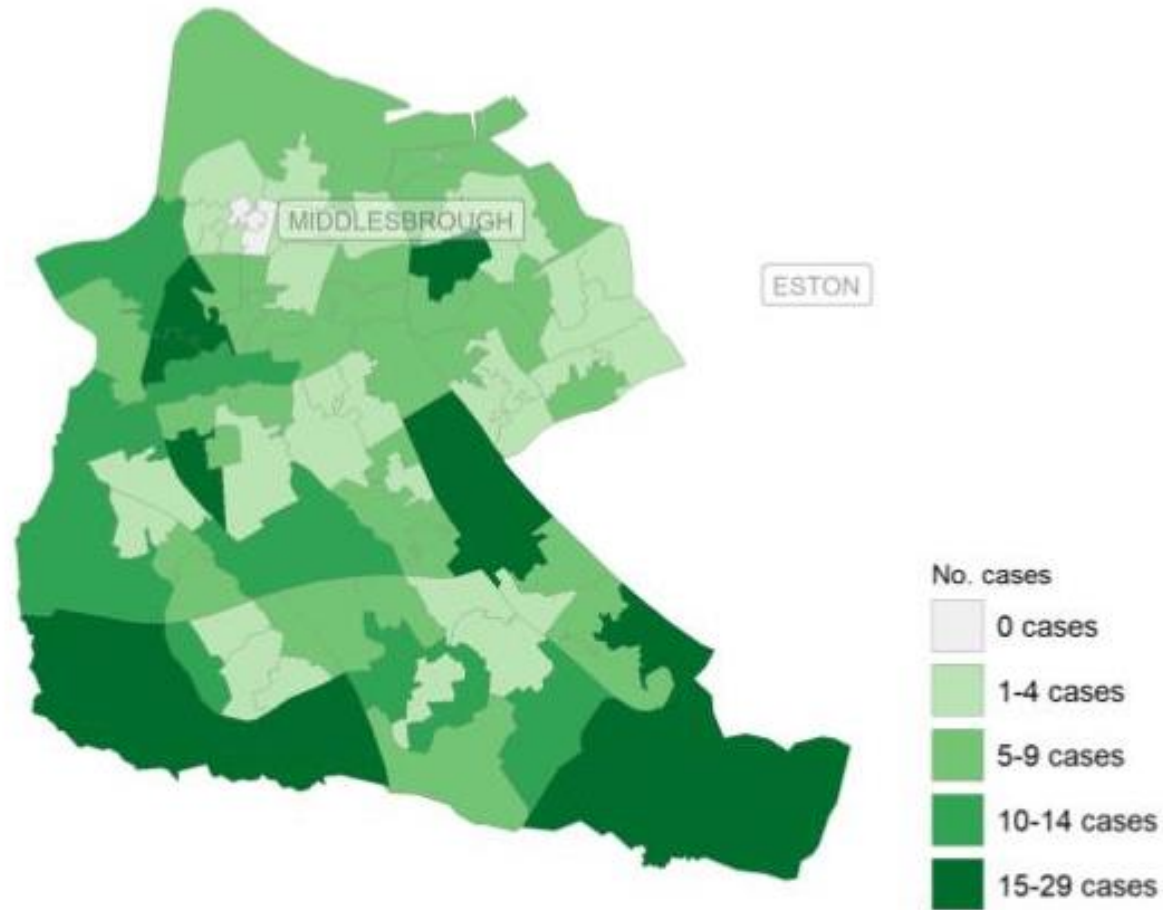


Cases reported to Public Health Team via Middlesbrough schools with test date in previous 2 weeks up to 26th October (some may live out of area). The PHE linelist shows there were 451 children aged between reception and year 11 with positive tests during the same 2 week period.

Cases reported to Public Health Team via Middlesbrough schools by week

Week Commencing	Primary		Secondary		Specialist		Total
	Pupil	Staff	Pupil	Staff	Pupil	Staff	
16/08/2021			1				1
23/08/2021	3	1	7				11
30/08/2021	19	4	28	3	1	1	56
06/09/2021	80	15	112	2	2	4	215
13/09/2021	84	20	164	8	1	3	280
20/09/2021	93	13	149	6	1	4	266
27/09/2021	69	14	147	9	1	2	242
04/10/2021	84	26	236	9	8	9	372
11/10/2021	84	22	354	9	14	3	486
18/10/2021	59	7	212	7	3		288
25/10/2021		4	6		1		11
Total	575	126	1416	53	32	26	2228

LSOA Map & Ward Rate – Previous Week



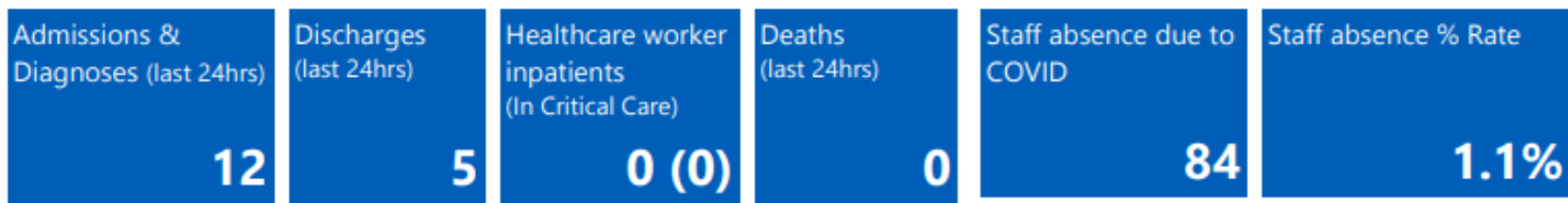
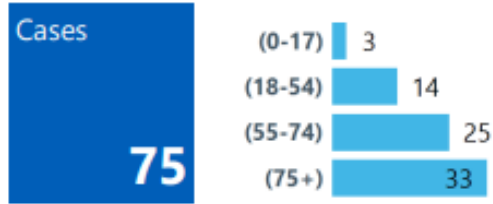
Ward	Pop	Cases	Rate per 1,000
Stainton & Thornton	2,931	28	9.6
Marton East	5,342	38	7.1
Linthorpe	6,488	46	7.1
Coulby Newham	8,528	58	6.8
Kader	5,170	35	6.8
Nunthorpe	4,890	29	5.9
Hemlington	6,330	36	5.7
Ayresome	6,141	34	5.5
Trimdon	4,819	26	5.4
Marton West	5,298	28	5.3
Berwick Hills & Pallister	9,154	43	4.7
Acklam	5,645	24	4.3
Park	9,776	39	4.0
Ladgate	5,395	18	3.3
Longlands & Beechwood	10,691	28	2.6
Brambles & Thorntree	8,697	21	2.4
North Ormesby	3,068	7	2.3
Park End & Beckfield	7,756	15	1.9
Central	12,783	21	1.6
Newport	12,078	18	1.5
Total	140,980	592	4.2

NHS – South Tees COVID Patients



Daily SitRep Totals : 28-Oct-21

Outbreak Totals : Spells : 4338 Unique patients : 3881



Cases 8am snapshot trend for outbreak

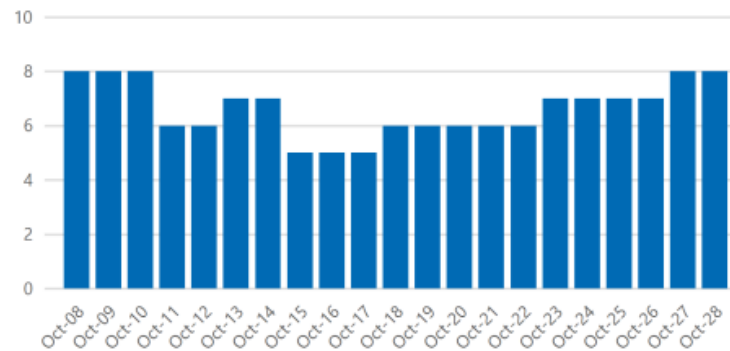


There are currently 75 inpatients with a positive PCR result within their hospital stay, and are reported nationally in line with the guidance.

Of those reported nationally the patients below are still being treated as positive operationally.

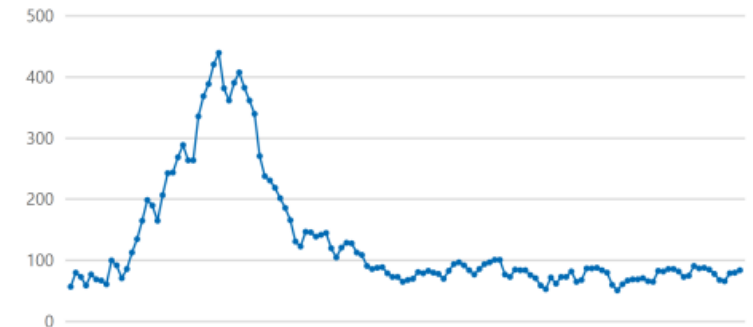


Daily number of COVID-19 patients in critical care: last 21 days



Staff absences associated with COVID-19: last 21 days

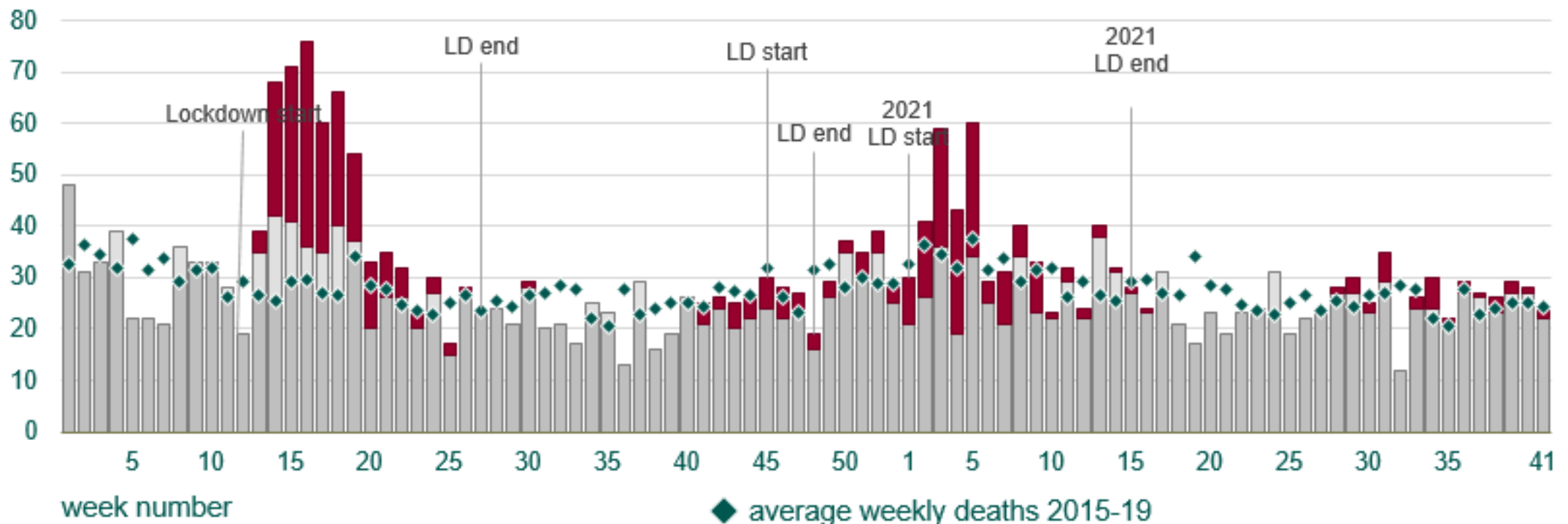
All reasons : Self/Household isolation, childcare/carers leave, track and trace etc.



COVID Deaths

- There has been 2 COVID deaths reported in previous week up to 15th October
- Total of 432 COVID deaths since start of pandemic

All deaths in 2020 and 2021 by week, with proportion where COVID-19 is mentioned



Vaccination Uptake Rates – 12+



National & NE LA COVID Vaccination Rates - 24th October 2021 (12+ years)

Local Authority	Dose 1 %
1 Northumberland	86.7
2 Derbyshire	86.3
3 Shropshire	86.0
3 Dorset	86.0
3 Cumbria	86.0
6 East Riding of Yorkshire	85.9
7 Hampshire	85.8
8 Rutland	85.5
8 Wiltshire	85.5
10 North Tyneside	84.9
11 North Yorkshire	84.8
12 West Berkshire	84.6
12 North Somerset	84.6
14 Gloucestershire	84.3
14 Devon	84.3
14 Herefordshire, County of	84.3
17 Isle of Wight	83.9
17 Somerset	83.9
17 Cheshire West and Ches	83.9
20 Wokingham	83.7

103 Middlesbrough	72.7
-------------------	------

England Average	76.5
-----------------	------

Local Authority	Dose 2 %
1 Northumberland	81.6
2 Dorset	81.4
3 East Riding of Yorkshire	81.3
4 Derbyshire	80.5
5 Cumbria	80.4
6 Shropshire	80.3
7 North Yorkshire	80.0
8 Hampshire	79.9
8 Wiltshire	79.9
10 North Somerset	79.7
11 Gloucestershire	79.4
12 Devon	79.3
13 Herefordshire, County of	79.1
14 Rutland	78.9
15 North Tyneside	78.7
16 West Berkshire	78.6
17 Somerset	78.5
17 Cheshire East	78.5
19 Cornwall and Isles of Scilly	78.3
20 Staffordshire	78.2

105 Middlesbrough	65.6
-------------------	------

England Average	70.5
-----------------	------

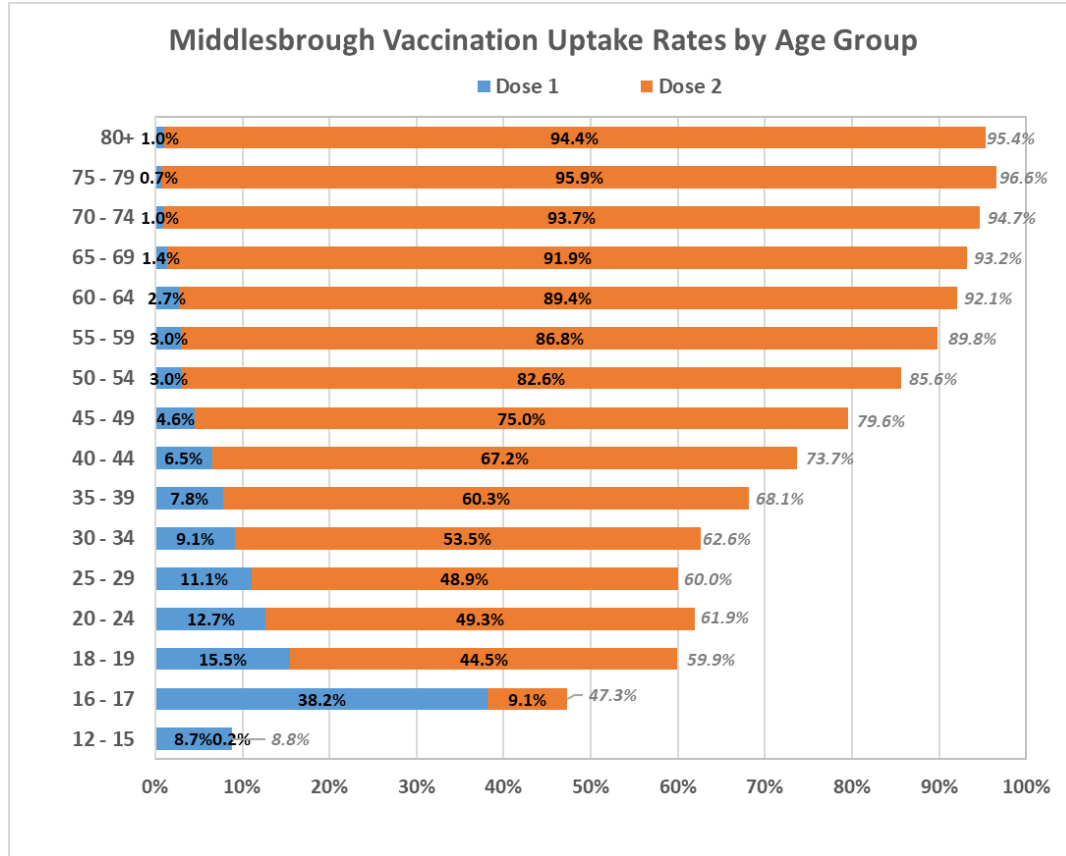
NE Local Authority	Dose 1 %
1 Northumberland	86.7
10 North Tyneside	84.9
26 Redcar and Cleveland	83.1
37 County Durham	82.2
40 Darlington	81.8
41 Sunderland	81.5
46 Gateshead	81.3
53 Stockton-on-Tees	80.6
62 South Tyneside	79.8
68 Hartlepool	79.0
103 Middlesbrough	72.7
108 Newcastle upon Tyne	71.0

North East Average	80.6
--------------------	------

NE Local Authority	Dose 2 %
1 Northumberland	81.6
15 North Tyneside	78.7
29 Redcar and Cleveland	77.3
36 County Durham	76.7
41 Darlington	75.6
43 Sunderland	75.5
50 Gateshead	75.0
54 Stockton-on-Tees	74.6
61 South Tyneside	74.0
67 Hartlepool	73.3
105 Middlesbrough	65.6
109 Newcastle upon Tyne	63.8

North East Average	74.6
--------------------	------

Vaccination Uptake Rates – Age Groups (12+)



Age Band	Unvaccinated	Dose 1 Only	Dose 2	Population	Unvaccinated	Dose 1 Only	Dose 2
12 - 15	7,458	711	13	8,182	91.2%	8.7%	0.2%
16 - 17	2,047	1,481	353	3,881	52.7%	38.2%	9.1%
18 - 19	1,368	528	1,519	3,415	40.1%	15.5%	44.5%
20 - 24	4,208	1,400	5,451	11,059	38.1%	12.7%	49.3%
25 - 29	5,294	1,468	6,469	13,231	40.0%	11.1%	48.9%
30 - 34	4,952	1,208	7,074	13,234	37.4%	9.1%	53.5%
35 - 39	3,841	941	7,276	12,058	31.9%	7.8%	60.3%
40 - 44	2,601	645	6,637	9,883	26.3%	6.5%	67.2%
45 - 49	1,867	418	6,848	9,133	20.4%	4.6%	75.0%
50 - 54	1,380	293	7,935	9,608	14.4%	3.0%	82.6%
55 - 59	1,030	300	8,772	10,102	10.2%	3.0%	86.8%
60 - 64	733	247	8,287	9,267	7.9%	2.7%	89.4%
65 - 69	515	104	6,984	7,603	6.8%	1.4%	91.9%
70 - 74	349	63	6,137	6,549	5.3%	1.0%	93.7%
75 - 79	151	32	4,303	4,486	3.4%	0.7%	95.9%
80+	289	62	5,865	6,216	4.6%	1.0%	94.4%
Total	38,083	9,901	89,923	137,907	27.6%	7.2%	65.2%

Over 50s
49,384 | 91.7%

Over 50s
4,447 | 8.3%

Over 50s Dose 1
1,101 | 2.0%

Least Dose 1 **72.4%**

- Data up to 26th October 2021
- Source – PHE from National Immunisation Management Service (NIMS)
- Denominators, ages and geographies are derived from electronic health records

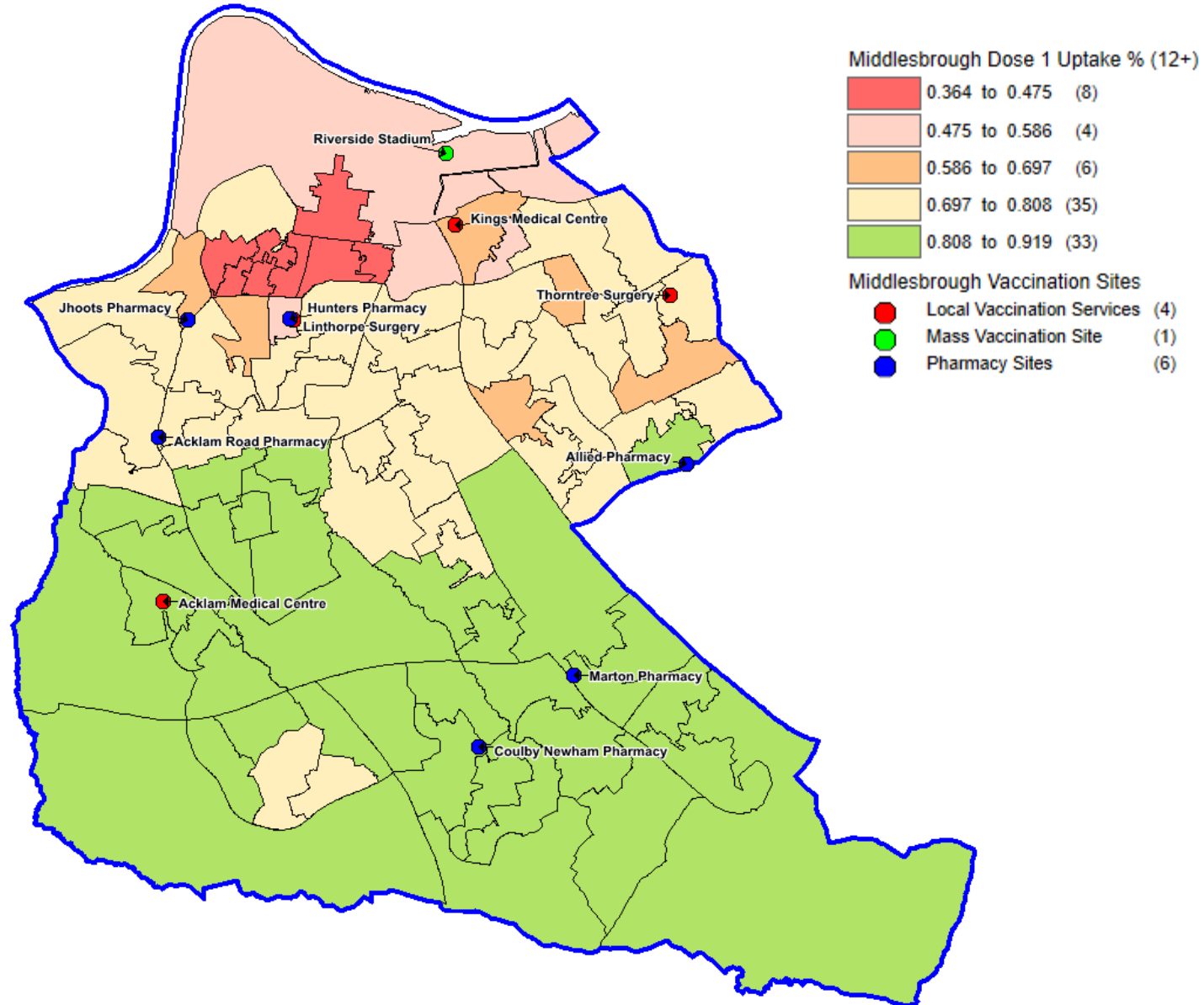
Vaccination Uptake Rates Dose 1 – MSOAs



MSOA	12-15	16-17	18-19	20-24	25-29	30-34	35-39	40-44	45-49	50-54	55-59	60-64	65-69	70-74	75-79	80+	Total
Ayresome	5%	22%	23%	44%	41%	33%	36%	41%	48%	62%	71%	80%	75%	86%	90%	81%	44%
Middlesbrough Central	5%	30%	51%	51%	45%	39%	46%	52%	56%	66%	73%	73%	77%	86%	88%	87%	50%
North Ormesby & Brambles	3%	36%	50%	52%	52%	58%	57%	67%	72%	77%	85%	88%	91%	91%	95%	89%	64%
Linthorpe East & Albert Park	12%	44%	63%	63%	62%	65%	69%	71%	77%	83%	87%	89%	93%	91%	93%	94%	72%
Park End	4%	41%	54%	60%	62%	65%	70%	81%	82%	90%	93%	94%	92%	95%	99%	95%	72%
Beechwood & James Cook	7%	45%	53%	65%	65%	70%	70%	77%	83%	83%	87%	94%	95%	95%	95%	94%	73%
Park Vale	10%	49%	55%	62%	66%	67%	72%	75%	83%	87%	89%	92%	95%	93%	97%	92%	73%
Berwick Hills	6%	43%	58%	65%	63%	71%	77%	80%	81%	89%	92%	95%	95%	95%	97%	95%	73%
Newport & Maze Park	13%	42%	52%	69%	66%	70%	78%	78%	83%	90%	91%	94%	94%	95%	96%	94%	74%
Linthorpe West	13%	48%	61%	66%	65%	68%	73%	75%	83%	86%	90%	91%	92%	94%	97%	94%	74%
Thorntree	4%	46%	62%	62%	64%	70%	71%	78%	84%	89%	90%	93%	95%	93%	98%	96%	75%
Easterside	7%	46%	62%	69%	65%	72%	80%	83%	85%	87%	94%	97%	96%	95%	98%	97%	79%
Stainton & Hemlington	8%	56%	66%	74%	73%	79%	79%	83%	88%	89%	93%	94%	95%	97%	97%	98%	81%
Coulby Newham	6%	67%	74%	78%	78%	76%	83%	87%	89%	90%	94%	95%	97%	95%	96%	97%	84%
Acklam	18%	55%	80%	80%	73%	83%	83%	85%	91%	95%	94%	95%	97%	95%	98%	98%	85%
Kader	20%	58%	74%	79%	76%	81%	88%	83%	92%	90%	94%	96%	94%	97%	98%	97%	85%
Nunthorpe & Marton East	10%	64%	80%	81%	81%	82%	88%	91%	89%	92%	94%	95%	97%	97%	98%	97%	86%
Trimdon	27%	65%	83%	80%	79%	85%	86%	91%	90%	95%	94%	96%	96%	99%	99%	98%	88%
Marton West	9%	66%	88%	86%	82%	80%	87%	93%	94%	94%	95%	96%	98%	97%	99%	99%	88%
Total	9%	47%	60%	62%	60%	63%	68%	74%	80%	86%	90%	92%	93%	95%	97%	95%	72%

- Data up to 26th October 2021
- Source – PHE from National Immunisation Management Service (NIMS)
- Denominators, ages and geographies are derived from electronic health records

Vaccination Uptake Rates Dose 1 – LSOAs



NIMS Vaccination Uptake – 3 Middlesbrough PCNs



UPTAKE WITHIN SELECTED POPULATION

158,429	62.7%	99,306	89,793
Population size	Received a vaccine dose	First doses	Second Doses

BOOSTER UPTAKE WITHIN SELECTED POPULATION

26,012	64.6%	16,792
Booster Eligible Population	Received a booster dose (of eligible population)	Booster Doses

Note: Booster eligible population is calculated using a 182 day gap from the completed second dose and inclusion in one of the booster cohorts (cohorts 1-9). As cohort sizes change and days pass this total eligible population will increase.

Uptake by JCVI group - Percentage

Use paging

